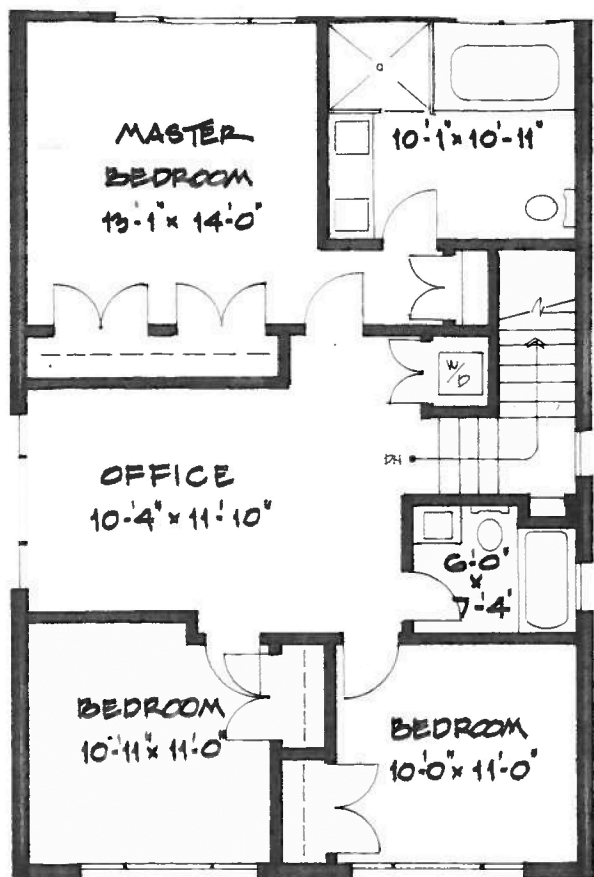
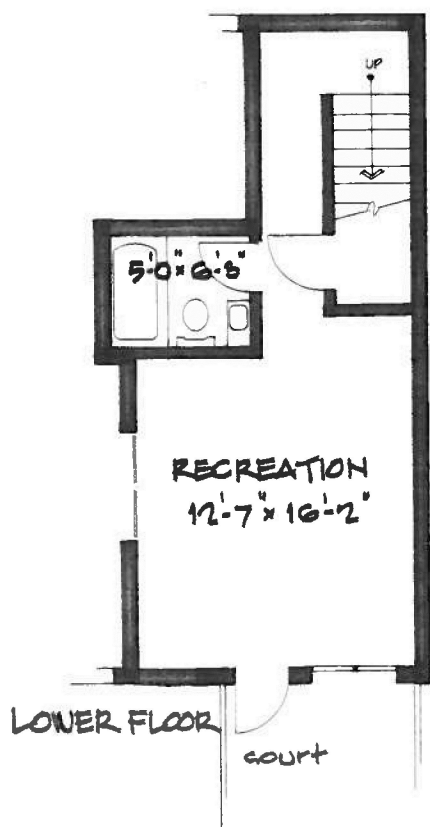


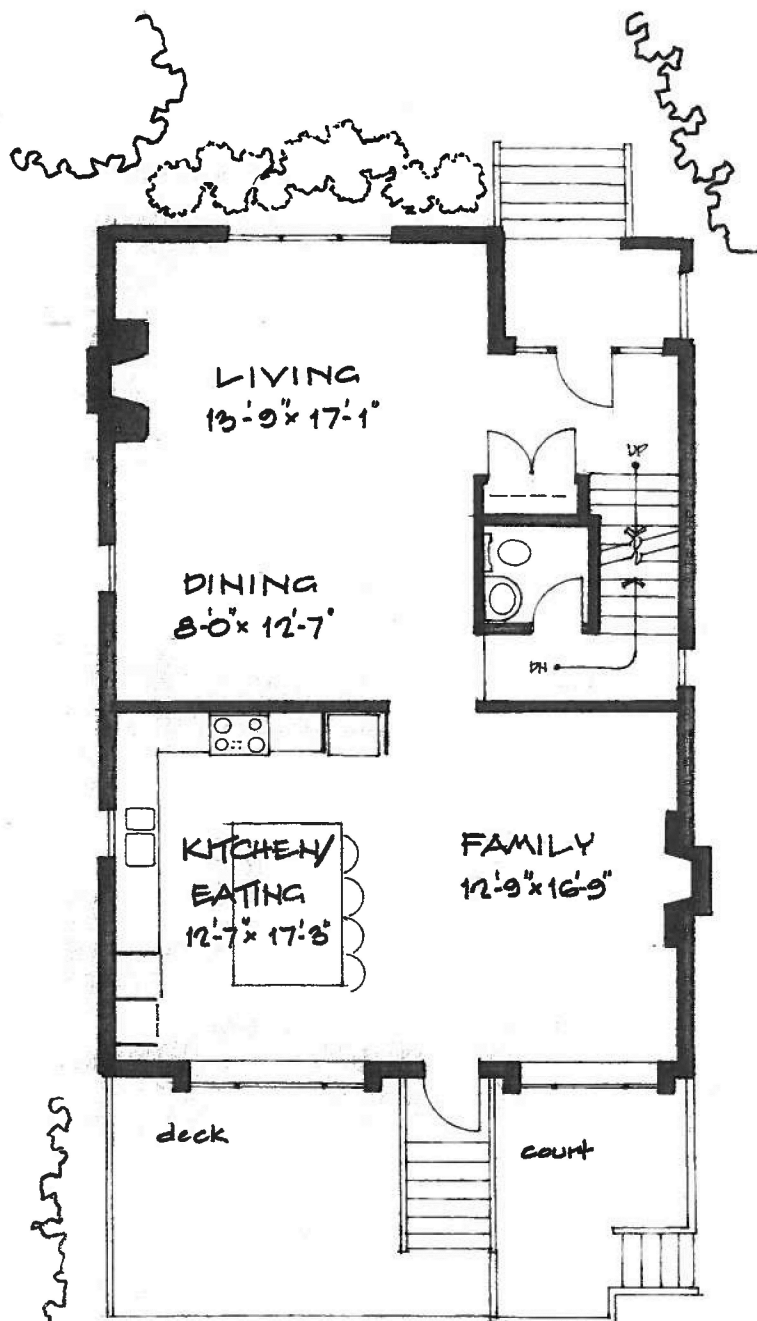
4444 West 15th. Ave.,
Vancouver, B.C.



UPPER FLOOR



LOWER FLOOR



terrace

Main Floor	1,055
Upper Floor	944
Lower Floor	1,395
Basement	1,932
Total	5,326 sq.ft

Schematics

(604) 435-4604

Room sizes should be considered approximate. Measurements are a guideline only and subject to certification. If greater precision is required the purchaser MUST employ the service of a Registered Quantity Surveyor. E&OE. Do not scale.